

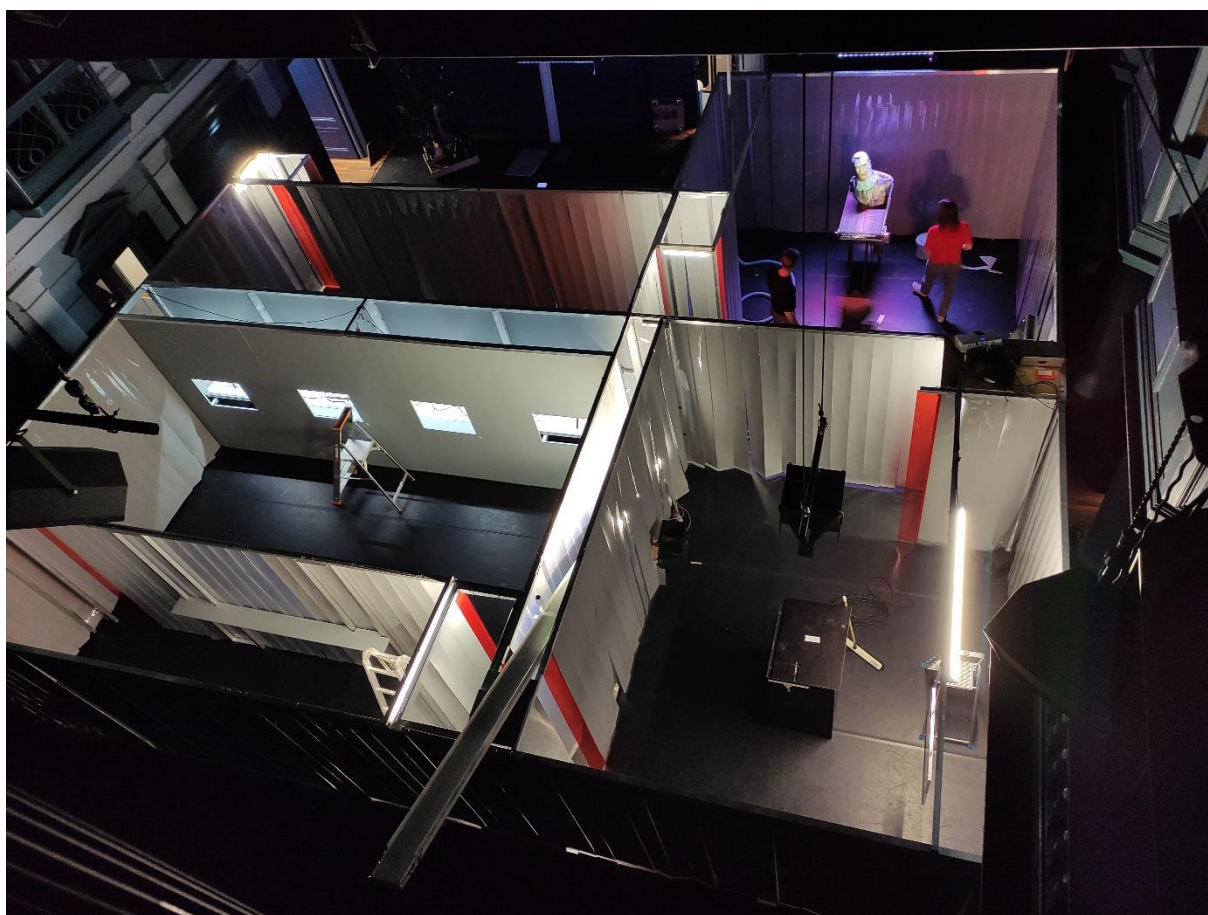
# Mount Average

## TECHNICAL RIDER

Version July 8, 2021

**CAMPO** ARTS  
CENTRE

**Julian Hetzel**



### **General production information**

Title : Mount Average  
Director : Julian Hetzel  
Executive producer : CAMPO (B), Ism&Heit Utrecht (NI)  
Première : October 8, 2020  
Performers : 3  
Technical crew CAMPO : 2 or 3 CAMPO- technicians  
Additional crew CAMPO : 1 production manager, 1 tour manager  
Assistance : 4 technicians from the venue for setup, 4 for get out  
Production assistance and reception during performance: 4 additional people  
Set-up day : day before first performance  
Dressing rooms : for 3 people

Duration performance : can be up to 4 hours. One audience member is at least for one hour in the installation

Parking : please provide parking space for a truck, 12T (9m)

Laundry : washing machine and place to brush off dried clay (dusty)

Catering : for 7 people

Catering backstage : fresh fruits, nuts, drinks (incl. sparkling water!) also for the setup

Audience on stage : audience is on the stage, maximum 24 people

Cleaning : please foresee a scrubber-dryer machine and water vacuum cleaner. Clay is being spilled. Performers are covered with clay so backstage can get dirty. Please take precautions.

Risk assessment : no strobe, no loud music, no smoke. For details see further.

## **Contact**

Technical director	: Piet Depoortere
e-mail	: <a href="mailto:piet@campo.nu">piet@campo.nu</a>
Production	: Wim Clapdorp
Tel.	: +32 9 267 10 11
E-mail	: <a href="mailto:Wim@campo.nu">Wim@campo.nu</a>
Tour-management	: Leen De Broe
E-mail	: <a href="mailto:Leen@campo.nu">Leen@campo.nu</a>

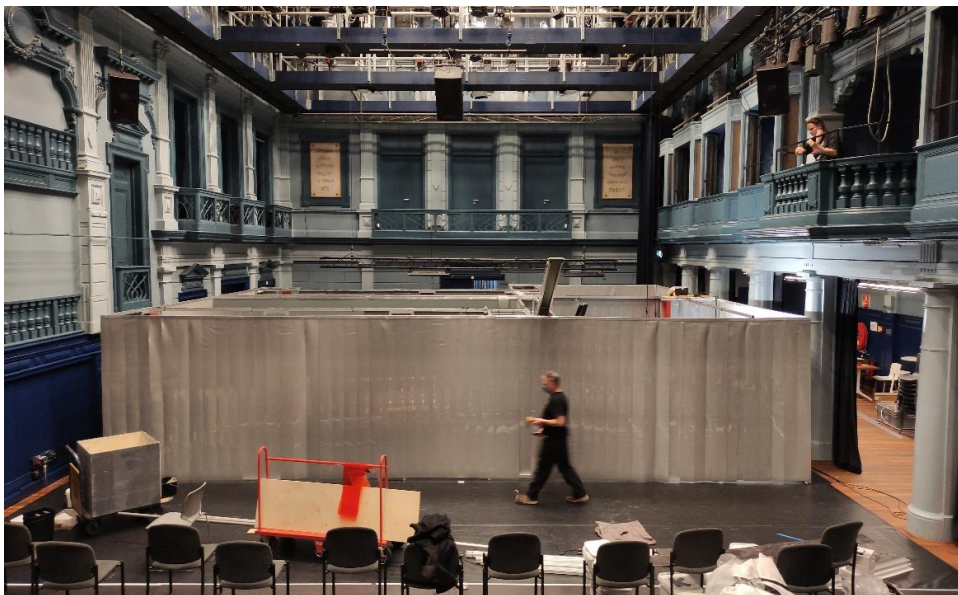
## **Essential Venue Specifications:**

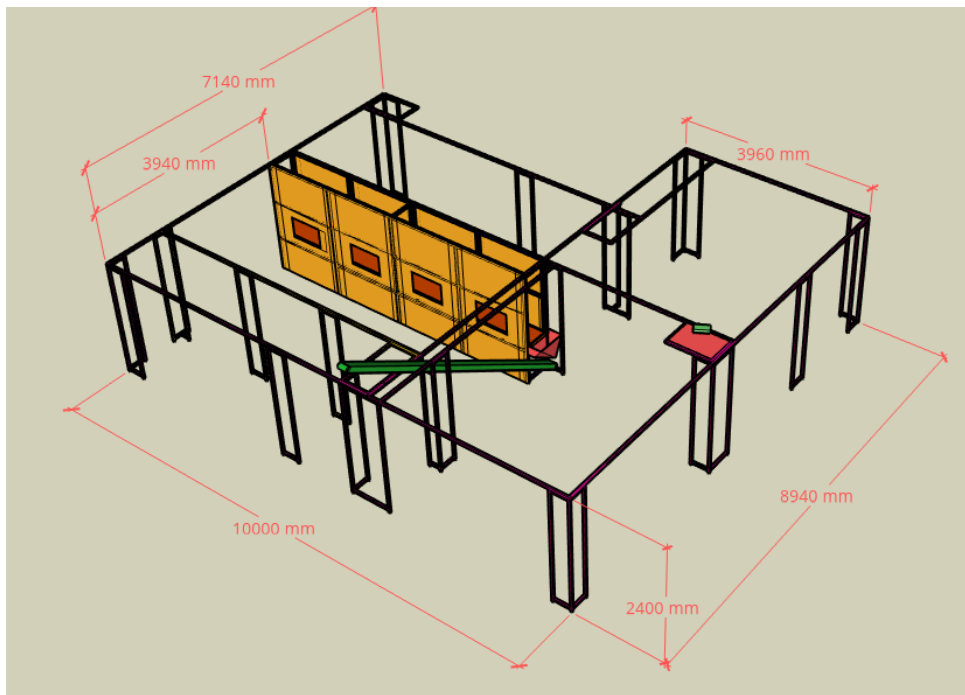
Dimensions: minimal stage dimensions is 10,50m width and 12m from audience seating to back wall.

height : minimal 5m under the grid

flooring : we would need the floor to be black. This can be a painted wooden floor or f.e. dance carpet. *Please take into account that clay and metal powder will be spilled while an audience is moving around. Also a heavy construction is built. These conditions will/might leave traces on the floor!*

## **The setting**





The set is a selfstanding aluminum construction in total 10m by 9m, 2,40m high.

We do need raised *audience seating* (auditorium) and about 3m distance between the auditorium and the installation.

Walls are made of PVC slats (certified FIRE CLASSIFICATION B2 DIN 53 382 / DIN 4102) and partly plywood (18mm).

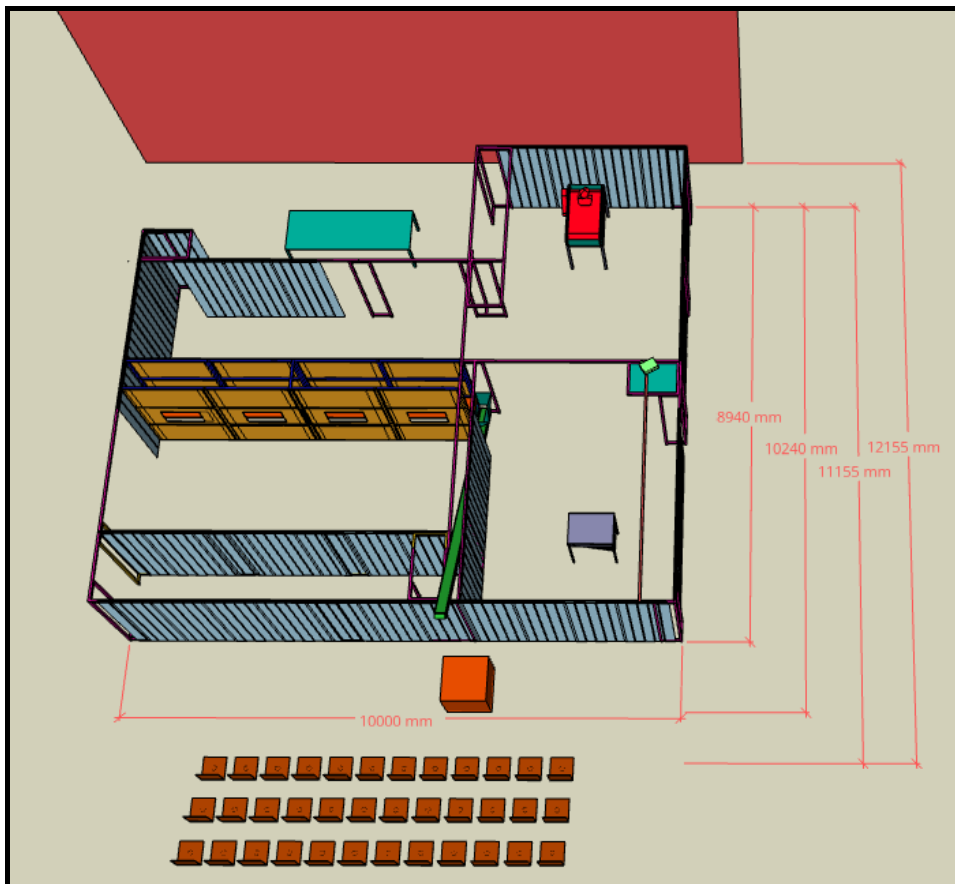
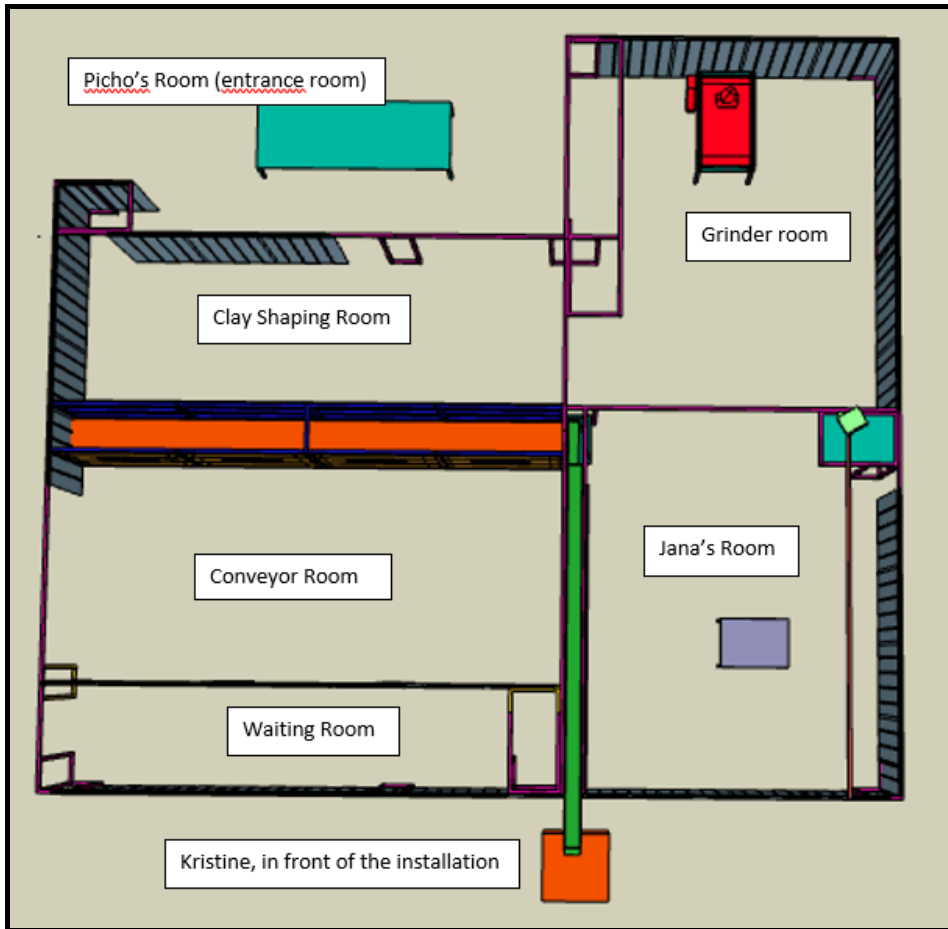
There are three conveyor belts, of which one is a grinding table.

The audience enters from the back. We will need to see in every venue how the audience (4 people at once) get to the back of the installation. Preferably this is from an unconventional trajectory so the front of the installation is only revealed at the very end of the performance.

The audience will get a receiver and an over-ear cask (Corona procedure will follow) for all instructions and soundscape.

There are basically 7 places the visitor is guided thru:

- Pitcho's room, contains table of 2,4x0,8m, 5 chairs and performer with clay
- clay room where the audience needs to put there hands thru holes and will get clay to manipulate
- grinder room (with conveyor grinding a statue)
- Jana's room, exhibition, where a performer collects dust from the grinder and fills frames.
- conveyor room, where to the audience sees how clay is being manipulated by other audience members
- waiting room, antichambe where the headphones are returned and people spend very short time
- auditorium, where he/she gets an overview of the installation and he third performer recycles the clay



## **LIGHT**

### **We bring:**

- neon lights and lid strips mounted in the installation will be the main lighting
- 7 led ray lights place on the floor in front and 1 mounted in the back on a fly-bar.

### **Please provide:**

- 11 profile spots (f.e. RJ614 or ADB DW105)
- 1 PAR CP60
- Gels L201, L137, R119 (frost), R132 (frost)
- Entrance lighting to be determined on the spot
- Lighting for the auditorium
- Please foresee a lift that is not too wide so we can operate and circulate in the installation

Rem: all lighting on the same universe. We will also require DMX on the stage.

## **SOUND**

### **We will bring:**

- About 28 in-ear monitors receivers with over-ear casks and with 6 transmitters (including antenna's). SENNHEISER IEM G4 – A. A frequency range is from 516-558 MHZ.
- a console (Digico s21).
- Monitor speakers (wired).

### **Please provide:**

- FOH sound system, left and right from the installation and centre cluster.
- 3 body packs and Dpa microphones complete with transmitters and receivers.

NOTE: Please make your frequency map for the microphones taking into account the frequencies from the in-ear monitors and possible other systems in the house. Also according to local frequency bandwidth regulation. Please check if permits are needed.

## VIDEO

We will bring a small projector that is focussed on the statue on the grinder.

## Rigging:



One bar needs to be rigged in the back of the installation for two Led strips

Two pulleys need to be positioned over Jana's room for a sand dispenser. Ropes need to come down in an accessible place so the dispenser can be lowered for refilling, just before the performance starts.

## Timing:

We will require a set-up day with 4 technicians.

We will also **require 4 people to assist for production and reception** during show hours and some time in advance for briefing.

Possible timing schedule, to be confirmed by the production office:

day -1	get in	house technicians	reception
9:30 - 10:30	unloading truck	4p	
10:30 - 13:00	lay-out and set-up	2p +	
	light positioning	2p	
14:00 - 18:00	set dressing	2p +	
	cabling sound/light	2p	
19:00 - 21:00	focus lights	2p	
<b>day 0</b>			
first performance			
9:30 - 13:00	tuning conveyors		
	set finishing	2p	
	sound & timing test		
14:00 - 16:00	sound check	1p	
	setup reception desk		
16:00 - 17:00	briefing reception		4p
18:00 - 22:00	show	1p	4p
<b>day 1</b>			
performance and get-out			
14:00 - 16:00	sound check	1p	
	setup reception desk		
16:00 - 17:00	briefing reception		4p
18:00 - 22:00	show	1p	4p
22:00 - 01:00	get-out	4p	

Centre cluster

## Performance schedule:

This schedule should be customized for every venue. The performance is going on from 6pm till 10pm.

Mount Average performance proposition ('maximum scenario') : 120 min + 60 min (these 60 minutes can only be sold AFTER the first 120 min are sold out)

	18h					19h					20h					21h												
timeslots (minute)	0	10	20	30	40	50	0	10	20	30	40	50	60	70	80	90	100	110	120	130	140	150	160	170				
rooms	groups (1 to 12 and then in reverse from 13 to 18 ; 4 persons in each group)																											
1 Pitcho	18	17	16	15	14	13	1	2	3	4	5	6	7	8	9	10	11	12										
2 hands		18	17	16	15	14	13	1	2	3	4	5	6	7	8	9	10	11	12									
3 statue			18	17	16	15	14	13	1	2	3	4	5	6	7	8	9	10	11	12								
4 Jana				18	17	16	15	14	13	1	2	3	4	5	6	7	8	9	10	11	12							
5 hands show					18	17	16	15	14	13	1	2	3	4	5	6	7	8	9	10	11	12						
6 Kristien						18	17	16	15	14	13	1	2	3	4	5	6	7	8	9	10	11	12					

maximum audience/night: 18 groups x 4 = 72 (groups 1 to 12 and then in reverse, 13 to 18)

red zone = 4 volunteers needed for action in room 2 for audience in room 5

these 4 volunteers are also needed earlier in the schedule, to fill gaps in case of 'no shows' (number of people in room 2 needs to equal number of people in room 5)

## Risk assessment:

<u>General</u>		
<u>subject</u>	<u>danger</u>	<u>precautions</u>
moving parts, conveyor belt	figers pinched	wooden boards shield the covveyor
overhead convyor	Clay Falling, head injury	conveyor side shields boards under the conveyor
tripping danger		cables taped on the floor rooms are well lit when there is circulation
grinding machine		danger is very visible and audible installation is well let
blinders outside the installation	tripping, bumping	perfromer is guiding the audiens
panic	claustrofobic reaction	installation can be exited from all sides
fire		
<u>Corana measurements</u>		
audience capacity is limited to 4 people every 10 minutes (per room)		
mouth masks should be worn at all times		
plastic gloves are handed out and mandatory is some rooms		
headphones are desinfected after use.		
rooms are designed to enable the audience to keep a 1,5m distance		
installation is 2,4m high and constructed with flaps to enable good ventilation at all time		

## This technical rider:

Is part of the performance contract.

Please check for an update on the rider via:

[https://planning.campo.nu/nl/producties/mount/production\\_technical](https://planning.campo.nu/nl/producties/mount/production_technical)